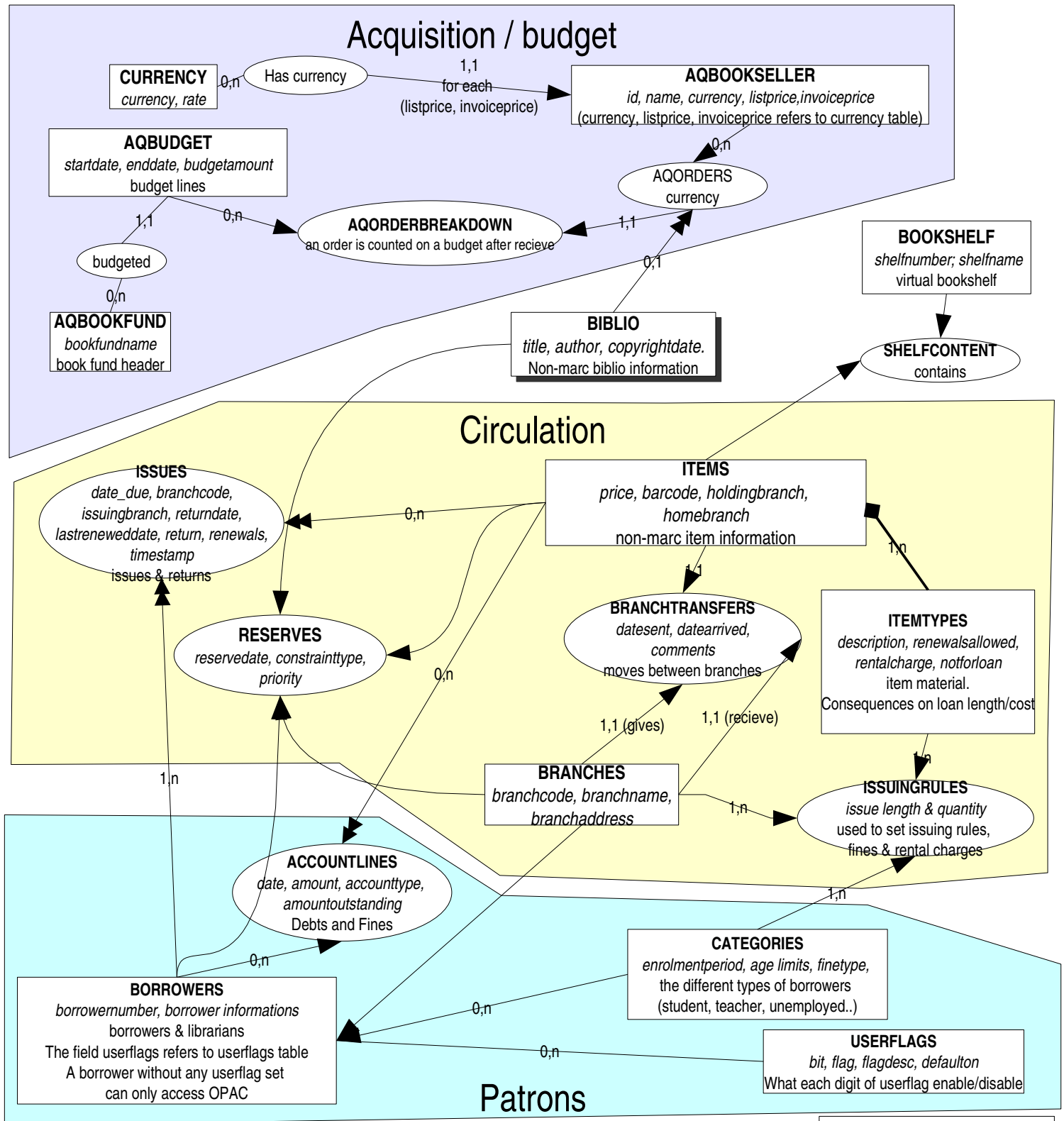


Koha 3.0 DB schema (1/2)

patrons / acquisition / circulation / budget management



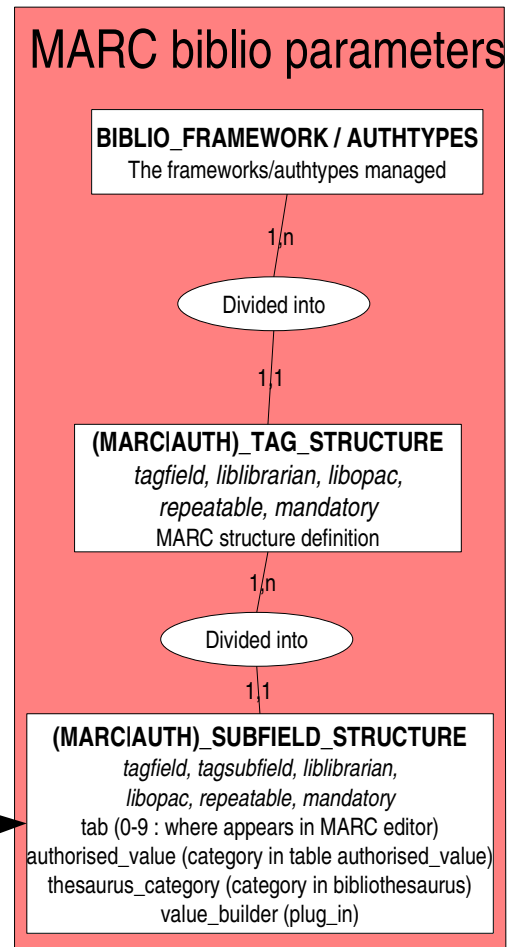
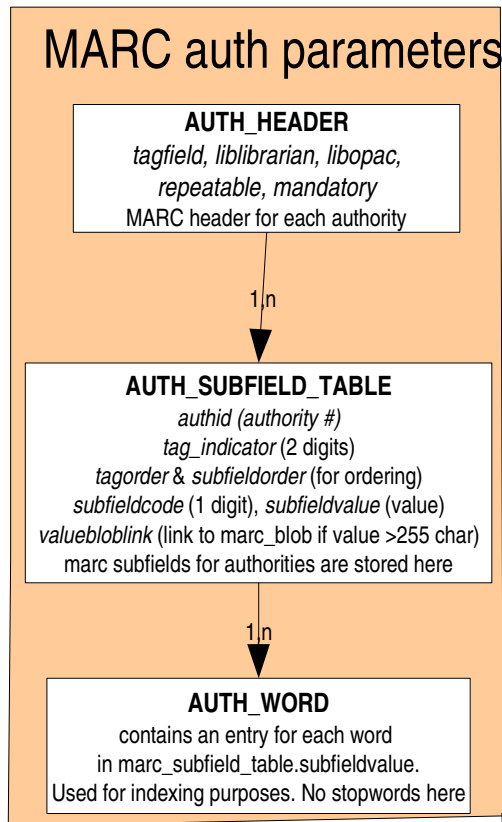
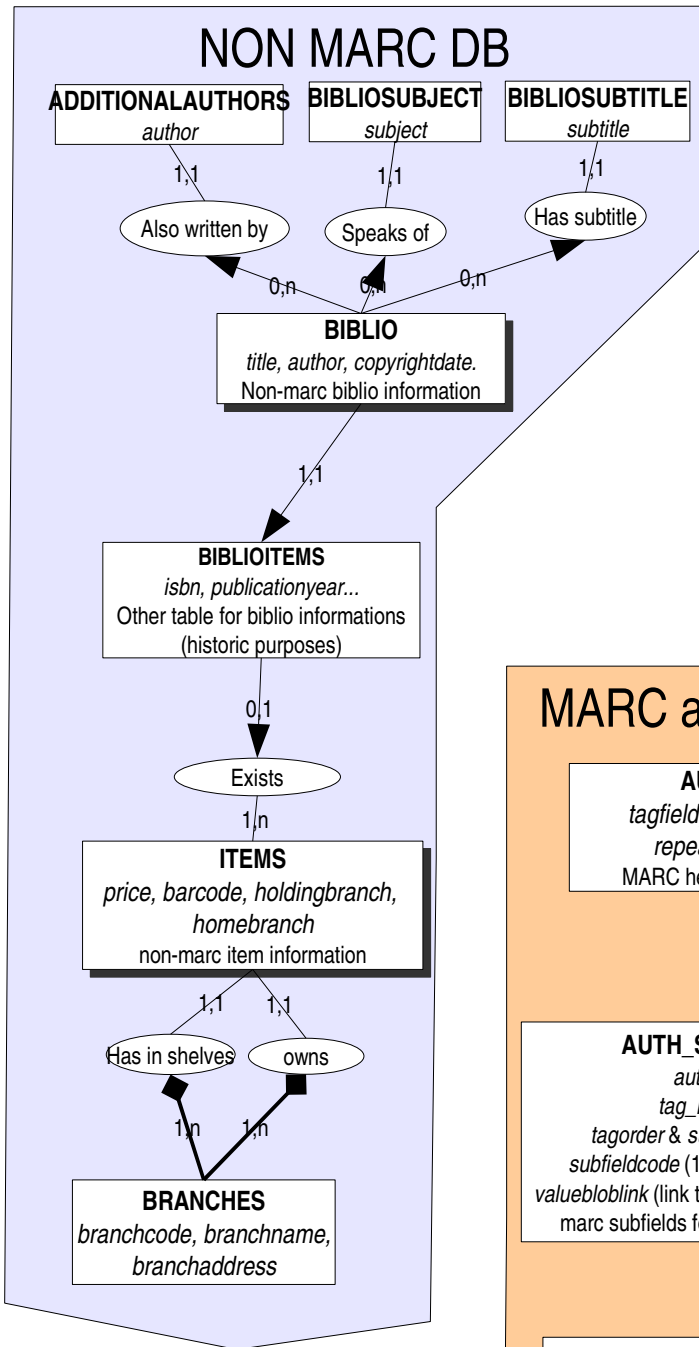
Means «A constraints B». A is the «parent» and B is the «child» (a black arrow means the constraint is CASCADE : when A is deleted, all B using A are deleted too. A square arrow means the constraint is RESTRICT (A can't be deleted when used by B) A double arrow means the constraint is SET NULL (when A is deleted, B value is set to NULL)



DROPPABLE TABLES ???
 accountoffset, aqorderdelivery, branchcategories & branchrelations
 (they are retrieved in Koha.pm, but it seems they are not use)

KOHAI : DB structure
 Author : Paul POULAIN, 25/01/2006

Koha 3.0 DB schema (2/2) catalogue management



AUTHORISED_VALUES
category, authorised_value, lib.
A category may be connected to
MARC_SUBFIELD_STRUCTURE. The MARC editor
shows the lib and stores the authorised_value in the DB

The DB contains some datas twice : in the MARC DB and in the non-MARC DB.
Koha supports (virtually) any MARC flavor with this DB :

- the non-MARC DB contains the most important fields in a column with a name not depending of the marc flavor.
- The MARC DB contains all the marc fields.
- The marc_xx_structure tables contains the meaning of each marc field/subfield and the link between some marc subfields and non-marc tables.
- A marc field can be linked to a any field from the following tables : biblio, biblioitems, items, additionalauthors, bibliosubject, bibliosubtitle.

For example : the marc subfield 200\$a is mapped to « biblio.title » in UNIMARC.
Note that ALL biblio related subs are located in C4/Biblio.pm.

The (marclauth)_xx_structure tables contains the meaning of each field/subfield stored in marc_subfield_table
marc* are related to biblios,
auth* are related to authorities

The MARC-DB also uses a marc_word table for perf. purposes : with this table all queries are indexed.